



Manuals in other languages are available online in our Download Section.
www.spinera.com/download

OWNERS MANUAL

ISUP (INFLATABLE STAND UP PADDLE BOARD)

Designed in Germany, Made in China, with reference to EN ISO 25649-1/2/7



Thank you for choosing SPINERA. Before using your new product, please take a minute to read the following warning and safety information. This manual is intended to alert you to potential hazards that may occur in all water sports.

Manufacturer / Representative:

SPINERA.com, Point of Sports GmbH, Kapellenweg 31, 83064 Raubling, Germany

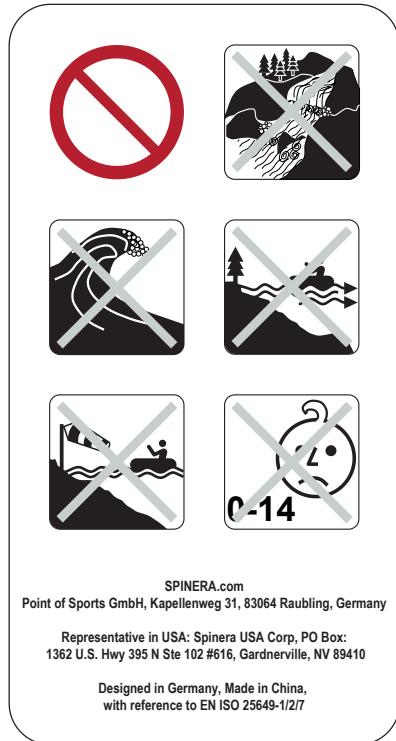
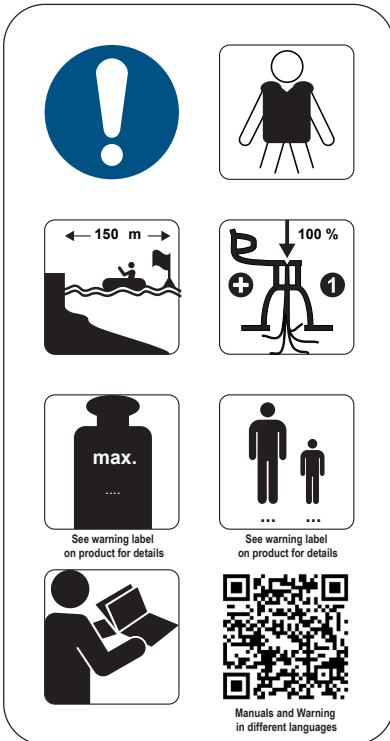
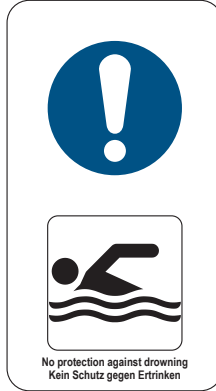
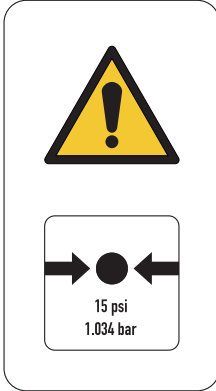
Representative in USA: Spinera USA Corp., PO Box: 1362 U.S. Hwy 395 N Ste 102 #616, Gardnerville, NV 89410

SAFETY

Paddle Sports can be dangerous. The user of this product acknowledges, understands and assumes the risks involved in paddle sports. The user must observe the warning labels and safety standards!

WARNING

For your own safety and that of your equipment, make sure to read the entire manual. Failure to follow the warning notices and instructions may result in property damage, serious injury or death.



SPINERA.com
Point of Sports GmbH, Kapellenweg 31, 83064 Raubling, Germany

Representative in USA: Spinera USA Corp, PO Box:
1362 U.S. Hwy 395 N Ste 102 #616, Gardnerville, NV 89410

Designed in Germany, Made in China,
with reference to EN ISO 25649-1/2/7

ACHTUNG!

Use of this product and participation in the sport involves inherent risks of injury or death. To reduce risks:

- Read instructions first.
- No Protection against drowning.
- Swimmers only.
- Do not use in wild water.
- Never use this product in offshore wind conditions. Using this product in windy conditions may result in serious injury or death.
- Never use this product in offshore current.
- Not for children 14 years of age and below.
- Maintain a distance of at least 2 meters (about 6 ft) from bathers.
- Never move more than 150m (about 500ft) from shore.
- Working pressure: 15 psi
- Always supervise children in water.
- Never use in breaking waves, riptide, river rapids, thunderstorms or lightning conditions
- Always wear a properly fitted USCG Type III/Level 70N, EN ISO 12402-5 approved personal flotation device or any equivalent approved Life Jacket / Personal Floating Device. This product is not a Personal Flotation Device.
- Always use extreme caution when using this product. Never act in a careless manner when using this product. Misuse of this product may result in serious injury or death.
- Only use this product if you are in good physical health, and know how to swim.
- You are responsible for you own safety and the safety of others around you when using product.
- If you are under the age of 18, you must have a legal guardian read these warnings and safety precautions. Do not use this product without adult supervision.
- Before using this product, the user should take lessons from a certified school. This product should not be used by anyone who is not experienced with StandupPaddling
- Never use this product with-out a proper sup leash. A loose Stand-up board in water is extremely dangerous to you, and everyone around you. Failure to use a sup leash may result in serious injury or death.
- Never exceed the maximum weight or user capacity stated for this product.
- Never exceed the manufacturer's recommended number of users for this product.
- Always evenly distribute the weight from user or gear to prevent possible capsizing.
- Never Jump or Dive from this product.
- Check your equipment prior to each use for signs of wear, leaks or failure and replace it if you see any sign of wear.
- Do not use this product under the influence of alcohol, drugs or medication.
- Always paddle with an experienced partner when using this product.
- Always observe Coast Guard rules and regulations when using this product.
- Use caution: Carrying the board in windy conditions may result in serious injury or death.
- Never use this product near other boat traffic, or watercrafts.
- Never use this product near crowded beaches or waters.

OWNERS MANUAL - SUP - EN

SETTING UP YOUR ISUP

Choose a smooth and clean surface to unfold your board.

• INFLATE



Make sure that the valve is free of sand or dirt. Unscrew the valve cap.

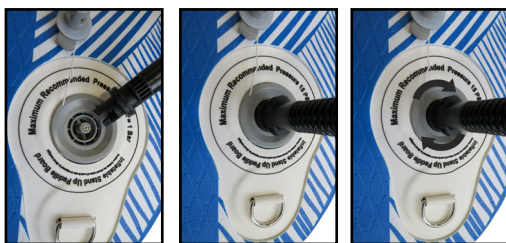
Spinera is using 2 type of valves:

Push / Turn Valve:

Push pin in and turn it 90 degree, so that it pops out and is fixed in the „Out“ position.

Push / Push Valve:

Push pin once so that it pops out and is fixed in the “Out” position.



Connect the pump nozzle into the valve and turn it clockwise. Make sure the pump hose is connected to the 'Inflate' outlet on the pump side.

Before undertaking a long paddle, inflate the board for a full 24 hours to make sure the board is airtight. When paddling, the colder temperature of the water may cause a slight loss in chamber pressure. It is good to carry a pump with you.

Maximum air pressure for this product is 15 psi. Do not use an air compressor.

WARNING: Damage to your board caused by over inflation is not covered by your Warranty.

• PADDLE SIZE



• INSTALL THE SLIDE IN CENTER FIN

Once the board is inflated, install the center fin. Slide the fin into the slot backwards and secure the fin with the clip (“Click”)



• TIGHTEN THE VALVE



The valve is a service point which has to be tightened before first use and 1-2 times during the season. There might be a slight release from transport, lapping of the waves etc.

Tear Down your ISUP



- **Inspect:** Make sure that the board, valve is free of sand or dirt. Unscrew the valve cap.
- **Deflation:** Slowly press down the button on the valve to start letting the air out of the board. There will be an initial burst of air, but that will slow down quickly.

Spinera is using 2 type of valves:

Push / Turn Valve:

Push pin in and turn it 90 degree, and lock it into „in/open“ position.

Push / Push Valve:

Push pin once to open valve and lock it in the “in/open” position.

- Remove the Clip of the Center Fin and remove the center Fin by sliding forward.
- Roll Board to fit in bag.



Due to the high pressure, the air flow coming out of the valve can cause injuries. Keep your body, especially your face and eyes, at a distance when releasing air from the air chamber.

BOARD CARE AND STORAGE

- Do not leave the board in the direct sun or in the hot car. If the board is going to be in warm environment, slightly underinflate the board and put it in the shadow.
- **WARNING:** Damage to your board caused by over inflation or due to extreme conditions is not covered by your Warranty.
- Remove sand, dirt and salt water after use. Do not use aggressive or abrasive cleaning products. Most dirt can be removed only with fresh water or mild soap and fresh water. The Board may only be rolled together. Always remove the fin! To avoid mildew buildup let the board completely dry before storage. Please roll up only in dry and clean condition! Pay attention to the correct rolling direction when packing always roll towards the valve storage. Use the enclosed bag for storage. You may also store the Board inflated. Hanging the Board is not recommended. Do not store in extreme conditions. Store in a clean and dry place.

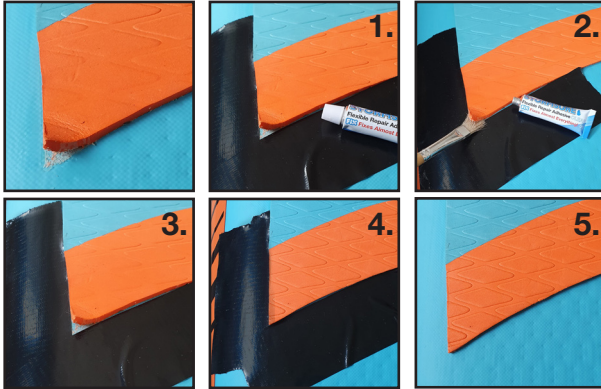
FINDING AND FIXING LEAKS

The PVC is highly durable. In case of puncture or minor damage, the PVC is very easy to repair. If your board is losing pressure, not due to cold temperatures, check the board leaks. First tightly close the Valve. We recommend mixing soap and water in a bottle and sprinkling it over the closed valve. If there is still a leak please follow “Replace the Valve”

If the board is leaking air and the valve is all right, you could have a small puncture. Sprinkle the board with soapy water until you see bubbles appear and mark the position of the puncture.

- **Punctures measuring less than 3 mm** you can fix without patch. Deflate your board, then clean and dry the area. Apply a drop of PVC glue (we recommend Seamseal) to cover the puncture and let it dry for approximately 12 hours.
- **Small repairs:** Small leaks such as cuts or holes up to about 12 mm can be repaired with a round patch with a diameter of about 76mm. We advise you to buy a 2-component pvc glue. Use the enclosed PVC patches of your repair kit and follow the instructions of the pvc glue.
- **Major repairs:** Please contact your dealer!

FIXING DETACHED EVA



1. Tape around the area you want to glue on. To protect the surface.
2. Use a common one component PVC glue. Put the glue on both sides - the board and the EVA.
3. Let the glue cure a bit so that it no longer draws threads and is slightly dry.
4. Press the two parts together for 1 minute.
5. Remove the tape and wait for **12 hours** until using the board for your next adventure.

REMOVING OR REPLACING THE PUMP VALVE

First make sure that the board is fully deflated and without fin.



video:

how to fix valve

- Remove the protective cap from the valve
- Turn the valve anticlockwise to loosen the outer part by a couple of turns and then continue to unscrew it by hand. Before screwing it on again, it is recommended to apply a small amount of silicone grease or vaseline to help seal valve again. This product should also be applied to the black ring on the outer valve to ensure it is properly sealed.
- Make sure there are no particles of sand or other foreign bodies in any part of the valve, as this could damage the parts of the valve and increase the chance of leaks. Screw the valve back on using only your hands to connect the outer valve on the inner valve. Then use the special tool to tighten it. Make sure you do not tighten it too much, as this could damage the valve and reduce its ability to withstand air pressure.

LEASH



To prevent the loss of the board in case of a fall into the water, the use of the Leash is strongly recommended. If the Leash is not included in the standard delivery, the Leash can be purchased from spinera.com or from retailers. The leash should be attached to the ankle each time you use the ISup. For this purpose the strap with the velcro fastener has to be used. It should not be too tight but also not too loose on the ankle. The other end of the leash should be attached to the rear end of the ISup, to the rear-heavy D-ring.

When using the leash in difficult water conditions (rivers or waters with currents and/or strong wind), it may be necessary to use a leash with a quick release device. We recommend obtaining additional advice from your dealer.

Limited Warranty 12 month:

The warranty for this product is only granted if it is used properly and for its purpose! Point of Sports GmbH is not liable for damages resulting from improper use. This warranty does not include: DAMAGE DUE TO EXCESSIVE PUMPING, CRACKING, CUTTING, HOLES and CUTS CAUSED DURING NORMAL USE, products involved in ACCIDENTS, products used in RENTAL or COMMERCIAL USE, damages caused by IMPROPER STRENGTH or IMPROPER USE, BLEACHING by UV radiation. Please note: An air loss of up to 20% (from 15psi to 12psi) within 48 hours is normal. If the air loss is more than 20% within 48 hours, a warranty claim may exist, provided that no manual damage is the cause of the air loss. For warranty claims, please contact your dealer!



The SPINERA Product Range:

Besides our various SUP and SUPKAYAK Boards we do have a lot more to offer. Everything about watersports and the right accessories. From manual and electric pumps to paddles, to the right safety clothing such as vests and suits. Check out our product range on our website. www.spinera.com



ACCESSORIES

EVERYTHING YOU NEED



Manuals in other languages are available online in our Download Section.
www.spinera.com/download